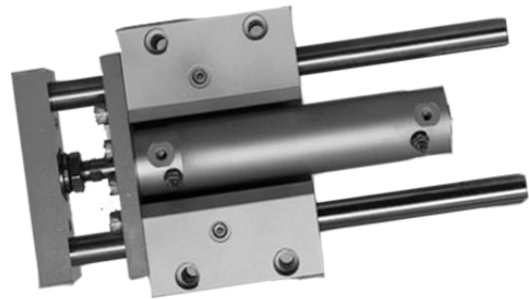


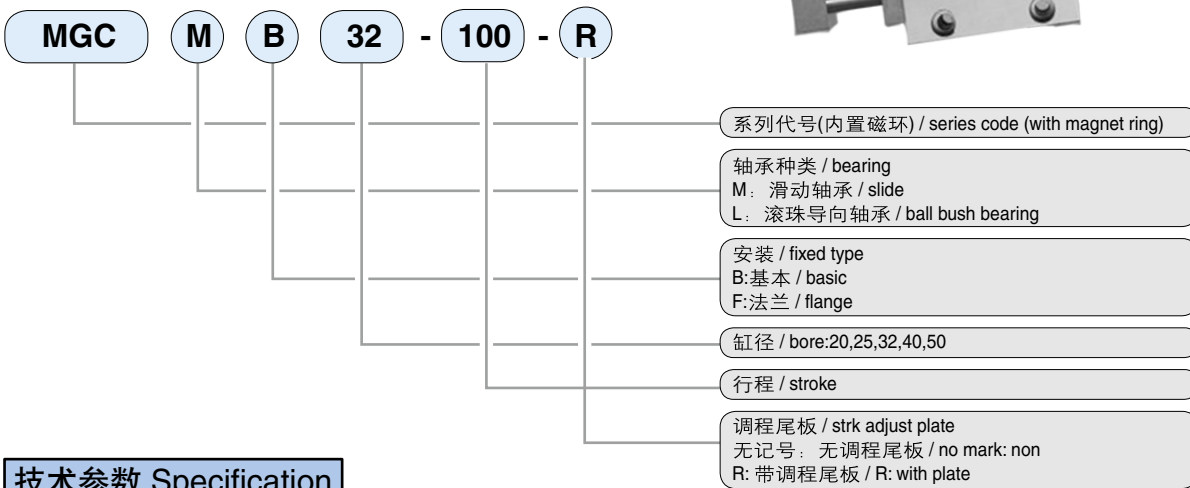
MGC

系列 **小型带导杆气缸**
Series **Mini compact twin-rods cylinder ,with rod guider**

MGC 系列小型带导杆气缸 Series mini compact twin-rods cylinder ,with rod guider



型号注释 Order Code



技术参数 Specification

内径 bore(mm)	20	25	32	40	50	
流体 fluid	空气 / air					
动作形式 motion type	双动 / double action					
保证耐压力 Ensured pressure resistance [Mpa(kgf/cm²)]	1.5 (15.3)					
最高使用压力 Max operating pressure [Mpa(kgf/cm²)]	1.0 (10.2)					
最低使用压力 Min operating pressure [Mpa(kgf/cm²)]	0.15 (1.5)					
工作温度 / Working temp. (°C)	-5~ 50					
活塞速度 / piston speed (mm/s)	50~750					
缓冲 / cushion	气缓冲(气缸本身) / air cushion					
行程 公差 / stroke tolerance (mm)	+1.9 +0.2					
* 润滑 / lubricate	不需要 / no need					
轴承 / bearing	滑动轴承 / 滚珠导向轴承 // slide / ball bushing					
活塞杆不转动精度 Accuracy of the piston rod does not rotate	滑动轴承 / slide	± 0.1°	± 0.09°	± 0.08°	± 0.08°	± 0.06°
	滚珠导向轴承 / ball bush bearing	± 0.06°	± 0.05°	± 0.04°	± 0.04°	± 0.04°
接管口径 / pipe size	M5		1/8		1/4	

* 如需润滑，请用透平1号油ISOVG32 / Please use oil ISOVG32 1 to lubricate ,if necessary

行程/磁性开关选择 / how to order stroke / magnet switch

缸径 bore (mm)	标准行程 standard stroke (mm)	长行程 long stroke	环带安装型 trap mount	
			*磁性开关 with magnet sensor	开关固定码 switch code
20	75,100,125,150,200	250, 300, 350, 400	D-C73L	BMA2-020
25	75,100,125,150,200,250,300	350, 400, 450, 500	D-C76L	BMA2-025
32		350, 400, 450, 500, 600	D-C80L	BMA2-032
40		350, 400, 450, 500, 600, 700, 800	D-H7A1L	BMA2-040
50		350, 400, 450, 500, 600, 700, 800, 900, 1000	D-H79BL	BMA2-050

* 磁性开关规格及特性可参阅磁性开关之系列 / for more detail, please find our catalogue for switch