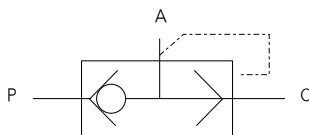


# KKP 系列快速排气阀

## Series quick exhaust valve



### 图形符号 symbols

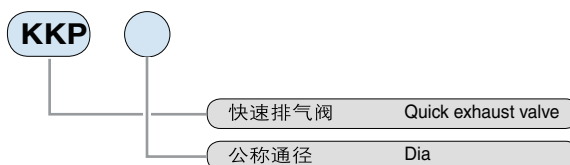


### 产品特点 Features

该阀一般安装在气缸与换向阀之间靠近气缸的管路上，使气缸的排气不经换向阀排出，达到提高气缸运动速度的目的。

This kind of valve is pipeline between the air cylinder and directional valve, closer to cylinder, so that air in cylinder is exhausted through it rather than through the directional valve for the purpose of raising the speed of cylinder operations.

### 型号注释 Order Code

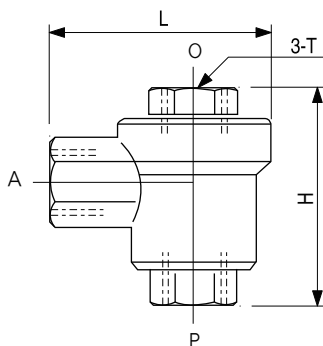


### 技术参数 Specification

型号 Type	接管螺纹 pipe size	公称口径 Dia (mm)	有效截面积S值 Effective sectional area S value (mm <sup>2</sup> )	耐久(万次) Durability (10K times)	工作压力范围 Working pressure range (MPa)	换向时间 Direrting time (sec)
KKP-8	G1/4	8	20	200	0.12 ~ 1.0	≤0.03
KKP-10	G3/8	10	35	150		≤0.04
KKP-15	G1/2	15	60	150		≤0.05
KKP-20	G3/4	20			0.05 ~ 1.2	≤0.05
KKP-25	G1	25				≤0.05

### 外形尺寸 Outlook & Dimension

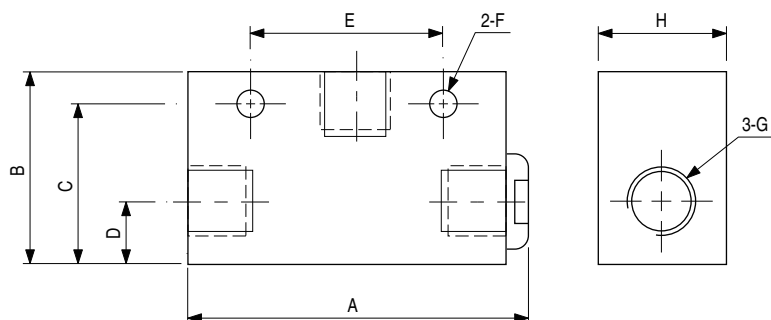
#### KKP8~KKP15



型号Type	T	H	L
KKP-8	G1/4	51	45
KKP-10	G3/8	68	62
KKP-15	G1/2	77	86

P — 接换向阀输出 Connect with directional valve  
A — 接气缸 Connect with cylinder  
O — 接消声器 Connect with muffle

#### KKP20~KKP25



型号Type	A	B	C	D	E	F	G	H
KKP-20	99	60	50	20	60	Ø8.5	G3/4	40
KKP-25	113	75	63	26	80	Ø8.5	G1	50